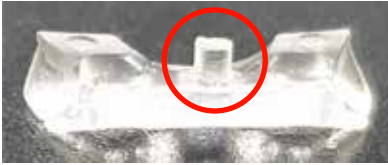


V-LINK SNAP-ON PLASTIC INSERT INSTALLATION MANUAL



**INSTALL ONLY NEW PARTS EACH SERVICE DONE ON LINES
DO NOT ATTEMPT TO REUSE DEFECTIVE OR DAMAGED PARTS
DO NOT REUSE DISASSEMBLED PARTS**

1. INSPECT MALE AND FEMALE PARTS FOR ANY DEFECTS BEFORE INSTALLATION. DISCARD ANY DEFECTIVE PART AND DO NOT ATTEMPT TO INSTALL IT.



2. ATTACH THE LINES TO THE V-LINKS PRIOR TO INSTALLING SNAP-ON LOCKING INSERTS. PLACE THE MALE PART UNDER THE V-LINK CORRECTLY ORIENTED AND WITH TEETH FACING UPWARDS. MAKE SURE IT IS INSTALLED ON THE FRONT SIDE OF THE V-LINK.

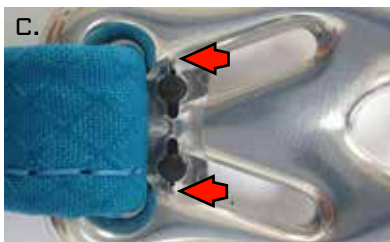


3. PLACE THE FEMALE PART ON TOP OF THE MALE PART TEETH IN THE FOLLOWING ORIENTATION (A). MAKE SURE IT IS INSTALLED ON THE BACK SIDE OF THE V-LINK. PRESS BOTH PARTS TOGETHER UNTIL THEY SNAP LOCK (B).

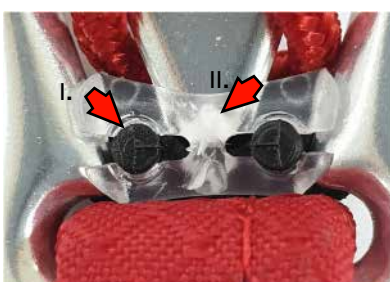


**PLASTIC SNAP-ON INSERTS MUST BE INSTALLED BY HAND
PREFERABLY WITHOUT USING ANY TOOLS**

4. INSPECT FOR CORRECT INSTALLATION. PINS MUST BE CLAMPED INSIDE HOLES AND BOTH PARTS ATTACHED WITHOUT ANY SPACE IN BETWEEN. WHEN INSTALLED CORRECTLY, PINS ARE TIGHTLY CLAMPED IN A SYMETRICAL MANNER WITH EVEN GROOVES ON THE EDGES OF THE FEMALE PART (C). SECURE THE LOCK OF BOTH PARTS WITH A TINY AMOUNT OF SUPERGLUE (OR SIMILAR) INSIDE THE GROOVES (D). TAKE EXTRA CARE TO AVOID GLUEING LINES TOGETHER OR TO THE V-LINK ASSEMBLY. ENSURE FREE MOVEMENT OF V-LINK ON THE RISER WEBBING AFTER INSTALLATION PROCESS!



5. THE PROCESS IS NOW COMPLETE. PAY ATTENTION TO THE FOLLOWING INCORRECT INSTALLATION PHOTOS. PLEASE REMOVE AND DISCARD THE SNAP-ON INSERT IF ONE OF THE FOLLOWING FAULTS IS PRESENT.



- I. GROOVES AROUND PINS ON FEMALE PART ARE ENLARGED INDICATING THE PIN IS INCORRECTLY CLAMPED. NOT SYMETRICAL ROUND GROOVES.
- II. WHITE AREA INDICATES INTERNAL DAMAGE DUE TO OVER BENDING/STRETCHING OF PLASTIC.
- III. UNEVEN AND NON SYMETRICAL GROOVES ON EDGES INDICATING FEMALE PART INCORRECTLY CLAMPING MALE PART.

SNAP-ON PLASTIC INSERTS MODEL SUPERSEDE PREVIOUS BOLT ON PLASTIC INSERTS MODEL.
CONTACT YOUR APCO AVIATION DEALER TO PLACE AN ORDER FOR A KIT OF NEW SNAP-ON INSERTS.