

# **F1** MK II

USER MANUAL

5/26 rev 3



## CONTENTS:

1	DISCLAIMER OF LIABILITY.....	4
2	INTRODUCTION .....	4
3	TECHNICAL DATA .....	5
4	CONSTRUCTION .....	6
5	MATERIALS.....	6
6	TRIMMING .....	7
7	RISERS .....	7
8	TRIMMERS.....	10
9	SPEED SYSTEM .....	11
10	OAA SYSTEM.....	12
11	HIT VALVES (HIGH-SPEED IN-TAKE) .....	13
12	PRE-INITIAL FLIGHT INSPECTION .....	13
12.1	FIRST CHECK AND PREFLIGHT INSPECTION.....	13
12.2	BRAKE SETTING .....	13
12.3	2D BRAKES OPERATION .....	15
12.4	TIP STEERING LOWERING KIT – 15KIT .....	16
12.5	TRIKES .....	17
13	ANNUAL / PERIODICAL AIRWORTHINESS INSPECTION.....	17
13.1	POROSITY.....	17
13.2	LINE MAINTENANCE .....	17
13.3	REGULAR INSPECTION CHECKS.....	18
14	EMERGENCY PARACHUTE.....	18
15	PARAGLIDING .....	18
15.1	TAKE OFF .....	18
15.2	FLIGHT TECHNIQUES .....	19
16	POWERED FLYING .....	23
17	PACKING .....	28
18	MAINTENANCE & CLEANING .....	28
19	BUTT HOLE II (AUTO DEBRIS RELEASE VALVES) .....	29
20	STORAGE.....	29
21	DAMAGE.....	29
22	THREE YEAR WARRANTY .....	29
23	GENERAL ADVICE .....	31
24	F1 - 18 LINE SKETCHES .....	32
25	F1 – 20 LINE SKETCHES .....	33
26	F1 - 22 LINE SKETCHES .....	34

# WARNING

THIS IS NOT A TRAINING MANUAL. IT IS EXTREMELY DANGEROUS TO YOURSELF AND OTHERS TO ATTEMPT TO FLY THIS OR ANY PARAGLIDER WITHOUT FIRST COMPLETING A FLYING COURSE GIVEN BY A QUALIFIED INSTRUCTOR.

APCO AVIATION'S GLIDERS ARE CAREFULLY MANUFACTURED AND INSPECTED BY THE FACTORY. PLEASE USE THE GLIDER ONLY AS DESCRIBED IN THIS MANUAL. DO NOT MAKE ANY CHANGES TO THE GLIDER.

AS WITH ANY SPORT - WITHOUT TAKING THE APPROPRIATE PRECAUTIONS, PARAGLIDING CAN BE DANGEROUS.

## 1 DISCLAIMER OF LIABILITY

Taking into consideration the inherent risk in paragliding or hang gliding, (free flying and motorized), it must be expressly understood that the manufacturer and seller do not assume any responsibility for accidents, losses and direct or indirect damage following the use or misuse of this product.

Apco aviation ltd. is engaged in the manufacture and sale of paragliding, motorized paragliding and emergency parachute equipment.

This equipment should be used under proper conditions and after proper instruction from a qualified instructor. Apco aviation ltd. has no control over the use of this equipment and a person using this equipment assumes all risks of damage or injury.

Apco aviation ltd. disclaims any liability or responsibility for injuries or damages resulting from the use of this equipment.

The glider is designed to perform in the frame of the required class as certified.

## 2 INTRODUCTION

The F1 is the result of our quest to bring safe, top speed and performance at incredible efficiency to experienced pilots across all paramotor disciplines.

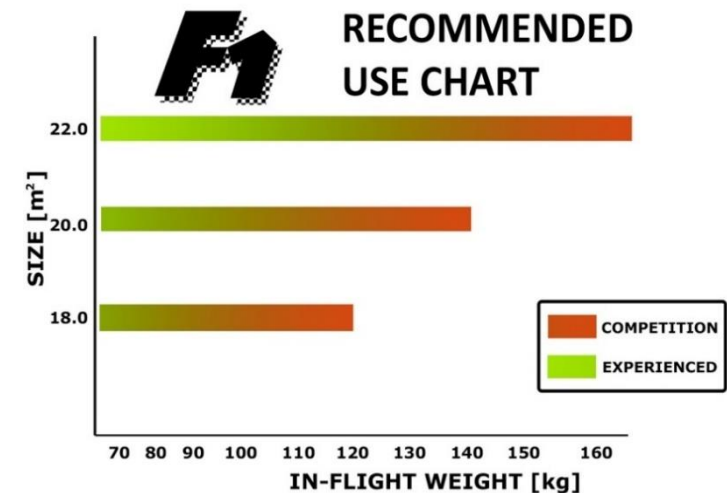
The F1 uses an advanced Reflex profile, to increase both performance and stability throughout the speed range.

The sail tension has been optimized to give the wing incredible rigidity without negatively affecting performance, so the wing is and feels very solid and reassuring in flight.

The riser / speed system / trim system was re-designed to incorporate all of Apco's ground-breaking technologies, and has a greater usable range than any wing we have built before, meaning you can launch and land at reasonable speeds, but open up with comfort for the race, or the perfect long distance XC flight you've been dreaming about – but, be warned, unless your friends are on the F1 too, you will be flying alone.

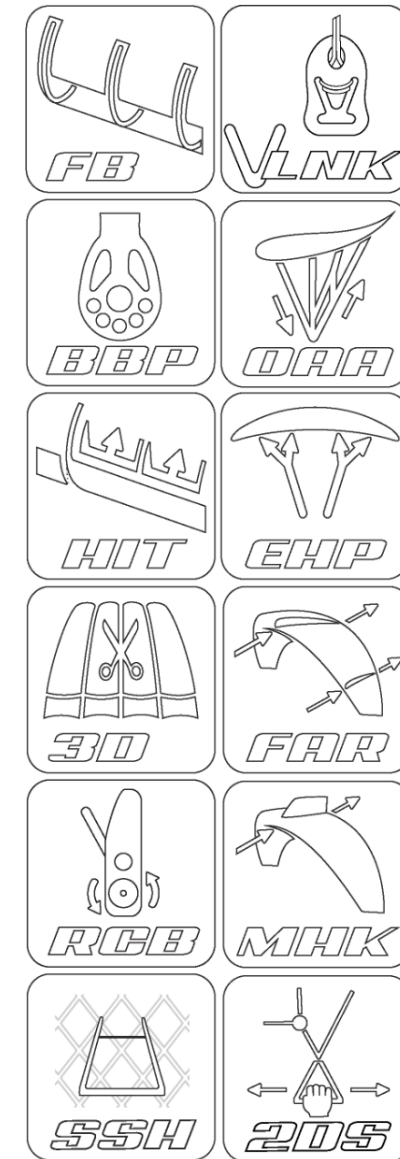
Although the F1 is not a dual-use wing, with the trimmers closed, the F1 will thermal much like a paraglider, and has exceptional glide ratio too, so if you like to mix it up on a good day, idle or cut the motor and crank it up to cloudbase with ease.

Handling is precise and predictable, with the ability to turn anything from a flat low sink rate thermaling turn, to slalom perfection. Inflation is very easy, and does not tend to overfly the pilot.



### 3 TECHNICAL DATA

F1 / Size	18	20	22
Code	22818	22820	22822
Cells	64	64	64
Area [m2]	18	20	22.0
Area (projected) [m2]	15.26	16.95	18.65
Span (incl. Stabilizer) [m]	10.90	11.49	12.05
Span (projected) [m]	8.64	9.10	9.55
Aspect Ratio	6.6	6.6	6.6
Aspect Ratio (projected)	4.6	4.6	4.6
Weight Range (all up) Paramotor [kg]	70-100	70-120	70-140
Weight Range (all up) Para-Trike [kg]	70-120	70-140	70-165
Canopy Weight [kg]	3.9	4.2	4.6
Root Cord m	1.92	2.02	2.21
Tip Chord [m]	0.12	0.13	0.14
Length of Lines on B [m]	6.59	6.95	7.29
Total Length of Lines [m]	334	352	370



For more info about the technology and features please visit [Apcoaviation.com](http://Apcoaviation.com)

V-min [km/h] at optimal wing loading*	27
V-trim (closed) [km/h]	38 - 42
V-trim (neutral) [km/h]	45 - 49
V-trim (open) [km/h]	55 - 59
V-max [km/h]	80
Min Sink [m/s] at optimal wing loading	1.2 m/sec

\*All Data measured at sea level, using a combination of GPS and Speed Probe, averaged over several runs



## 4 CONSTRUCTION

The glider is constructed with a top and bottom surface, connected by ribs. One top and bottom panel, together with the connecting ribs is called a cell. Each cell has an opening on the front lower part. The cells fill with air forcing the panels to take the shape dictated by the air-foil (rib) section.

On either side the wing ends in a stabilizer or wing tip, which provides straight-line (Yaw) stability and produces some outward lift to keep the span-wise tension.

The front part of the ribs incorporates APCO's FLEXON batten system to keep the leading edge shaped at high speeds and in turbulent air. They also improve the performance and the launch characteristics of the glider.

The line hook-up points are made of Dyneema and embedded in the bottom surface of the wing for minimal drag and maximum performance.

## 5 MATERIALS

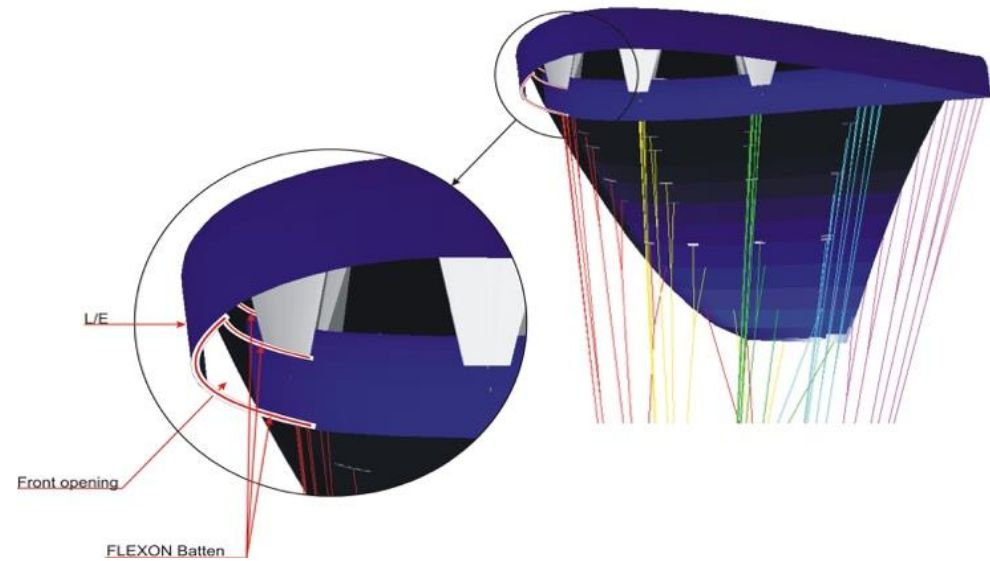
The glider is made from tear resistant Ripstop Nylon cloth, which is P.U. coated to zero porosity and then siliconized to give the fabric high resistance to the elements. Different cloth is used for the top, bottom and ribs due to their different functions.

The lines are made of Technora and Dyneema covered with a polyester sheath for protection against UV , wear and abrasion.

The bottom section of the brake lines is made of polyester because of its better mechanical properties.

The delta maillons and Vlinks that attach the lines to the risers are made of stainless steel and Aluminium.

New generation FLEXON<sup>®</sup> batten system in the leading edge of the ribs, insuring perfect profile. FLEXON<sup>®</sup> battens reduce the weight of the glider and guarantee no deterioration in performance or launch. Additional advantage of FLEXON batten is that it is practically indestructible, safeguarding the performance and launch over the lifespan of the glider.



## 6 TRIMMING

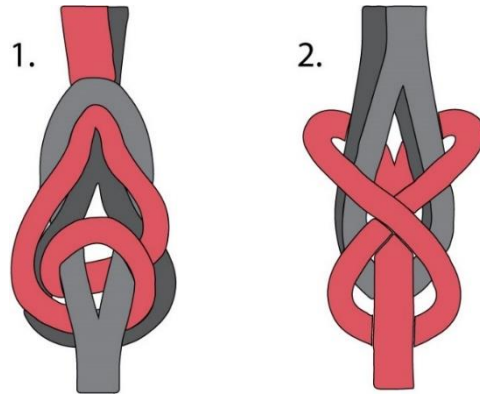
All Apco gliders are trimmed for optimum performance combined with unsurpassed safety. It is very important not to re-trim or tamper with any of the lines or risers as this may alter the performance and safety. Adjusting the brake line should be done in accordance with this manual and carefully checked before flying.

## 7 RISERS

The F1 is supplied with embedded OAA system risers and incorporates both stainless steel classic maillons and Apco exclusive Aluminum Vlinks. The risers are equipped with both an accelerator and trimmers and constructed using various materials that should stretch and settle after a few flights. The trimmer markings have been designed to accommodate this stretching and the Main blue neutral trim position line should come into effect after a few flights (see image). At no time should the pilot change the risers or use risers not intended for this specific glider as this will affect the performance and safety of the glider.

The Vlink is very light and strong and allows new riser design possibilities when used in combination with the classic maillons. The Vlinks do not allow lines trimming using the classic method but it is possible by applying the following method on the loops of the lines on each level:

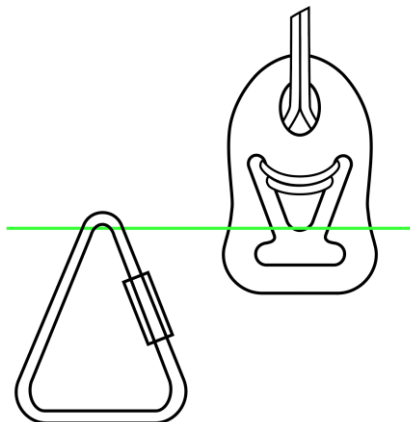
## V-LINK SNAP-ON PLASTIC INSERT INSTALLATION MANUAL



Line size	Method 1	Method 2
1.5mm	5mm	7.5mm
1.3mm	5mm	6.5mm
1mm	5mm	6mm

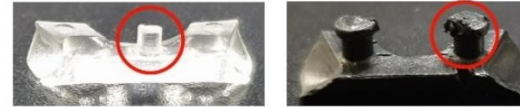
Apply desired method on different line diameters not mentioned in the table above but please note that the results will differ.

Please note that the Vlink “Zero” point is different from the classic delta maillons. See illustration below



**! INSTALL ONLY NEW PARTS EACH SERVICE DONE ON LINES  
DO NOT ATTEMPT TO REUSE DEFECTIVE OR DAMAGED PARTS  
DO NOT REUSE DISASSEMBLED PARTS**

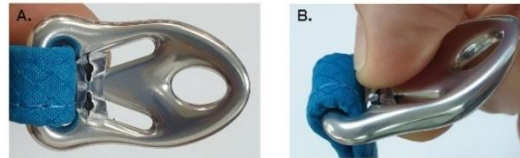
1. INSPECT MALE AND FEMALE PARTS FOR ANY DEFECTS BEFORE INSTALLATION. DISCARD ANY DEFECTIVE PART AND DO NOT ATTEMPT TO INSTALL IT.



2. ATTACH THE LINES TO THE V-LINKS PRIOR TO INSTALLING SNAP-ON LOCKING INSERTS. PLACE THE MALE PART UNDER THE V-LINK CORRECTLY ORIENTED AND WITH TEETH FACING UPWARDS. MAKE SURE IT IS INSTALLED ON THE FRONT SIDE OF THE V-LINK.

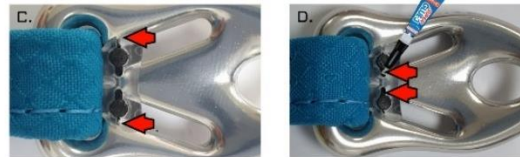


3. PLACE THE FEMALE PART ON TOP OF THE MALE PART TEETH IN THE FOLLOWING ORIENTATION (A). MAKE SURE IT IS INSTALLED ON THE BACK SIDE OF THE V-LINK. PRESS BOTH PARTS TOGETHER UNTIL THEY SNAP LOCK (B).

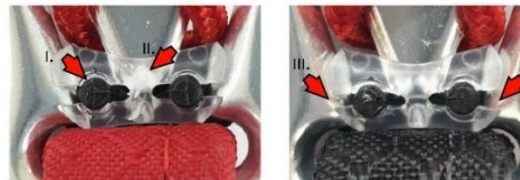


**! PLASTIC SNAP-ON INSERTS MUST BE INSTALLED BY HAND  
PREFERABLY WITHOUT USING ANY TOOLS**

4. INSPECT FOR CORRECT INSTALLATION. PINS MUST BE CLAMPED INSIDE HOLES AND BOTH PARTS ATTACHED WITHOUT ANY SPACE IN BETWEEN. WHEN INSTALLED CORRECTLY, PINS ARE TIGHTLY CLAMPED IN A SYMMETRICAL MANNER WITH EVEN GROOVES ON THE EDGES OF THE FEMALE PART (C). SECURE THE LOCK OF BOTH PARTS WITH A TINY AMOUNT OF SUPERGLUE (OR SIMILAR) INSIDE THE GROOVES (D). TAKE EXTRA CARE TO AVOID GLUEING LINES TOGETHER OR TO THE V-LINK ASSEMBLY. ENSURE FREE MOVEMENT OF V-LINK ON THE RISER WEBBING AFTER INSTALLATION PROCESS!



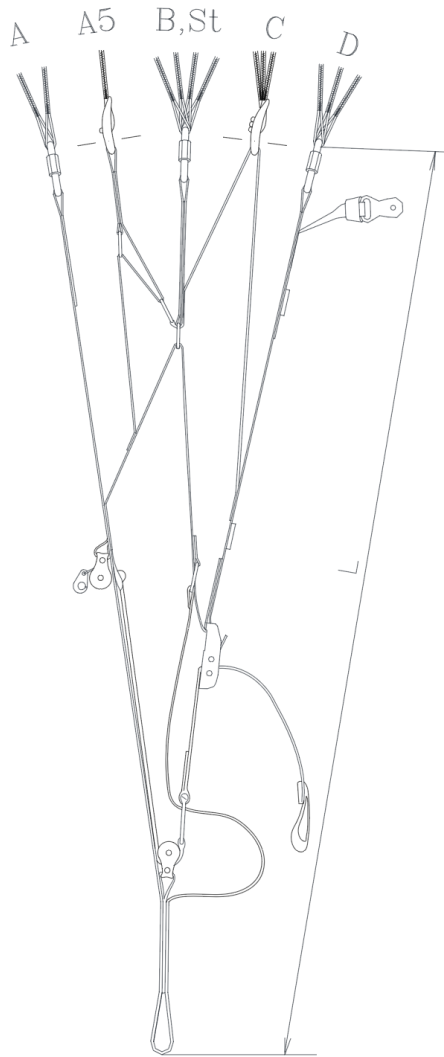
5. THE PROCESS IS NOW COMPLETE. PAY ATTENTION TO THE FOLLOWING INCORRECT INSTALLATION PHOTOS. PLEASE REMOVE AND DISCARD THE SNAP-ON INSERT IF ONE OF THE FOLLOWING FAULTS IS PRESENT.



I. GROOVES AROUND PINS ON FEMALE PART ARE ENLARGED INDICATING THE PIN IS INCORRECTLY CLAMPED. NOT SYMMETRICAL ROUND GROOVES.  
II. WHITE AREA INDICATES INTERNAL DAMAGE DUE TO OVER BENDING/STRETCHING OF PLASTIC.  
III. UNEVEN AND NON SYMMETRICAL GROOVES ON EDGES INDICATING FEMALE PART INCORRECTLY CLAMPING MALE PART.

SNAP-ON PLASTIC INSERTS MODEL SUPERSEDE PREVIOUS BOLT ON PLASTIC INSERTS MODEL.  
CONTACT YOUR APCO AVIATION DEALER TO PLACE AN ORDER FOR A KIT OF NEW SNAP-ON INSERTS.

REV.0



Length of risers L (Neutral Position L=485)

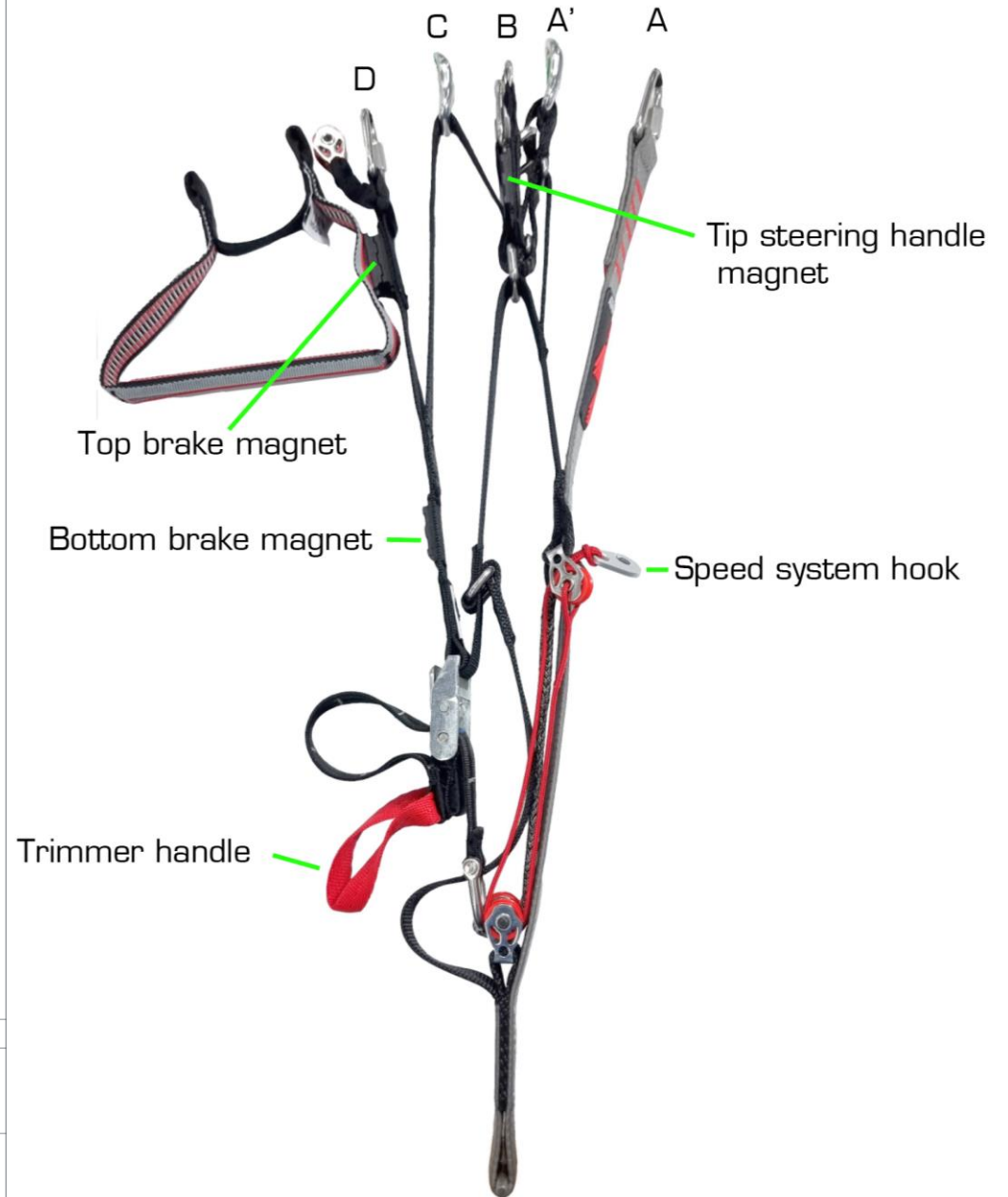
Connection to:	A1,3	A5	B,St	C	D
Speedsystem not activated trim down	485	465	460	445	435
Speedsystem not activated trim (0)	485	485	485	485	485
Speedsystem not activated trim up	485	510	525	565	615
Speedsystem activated trim (0)	350	420	455	53	615

\* All measurements are in mm

Drawn by	Jacob G	Part N	79950R/L	Toll	Quantity per glider	2
Date	19.01.26	Name	RISER		Drawing N	
Scale	N/A					
Approved	Jonathan Cohn					



Product  
NRG III / F1 / F3



## 8 TRIMMERS

The F1 risers are equipped with trimmers.

The neutral setting is when the A/B/C/D risers legs are of equal length in flight (Main Blue mark on the trim webbing)

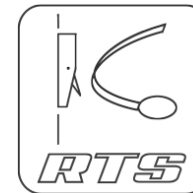
For Take-off and landing, it is recommended to set the trimmers in the closed (minimum trim speed). After take-off set trimmer to the Neutral position and close them again before landing. They can also be set asymmetrically on R and L sides to compensate for torque effect. The Trim System of the F1 is very effective for accelerating the wing on long flights.

### CAUTION

**DO NOT USE MAIN BRAKE HANDLES WHEN THE TRIMMER IS SET BETWEEN NEUTRAL AND FULLY OPEN LEVELS - USE TIP STEERING HANDLES.**

### REPLACING TRIMMER WEBBING

The trimmer webbing is replaceable. It is highly recommended to allow a certified repair center or APCO factory to replace the trimmer webbing. The worn-out webbing can be removed by cutting it from the metal D-ring (Do not open the D ring screw, Use Loctite if it was opened). Install the new webbing in the same orientation into the roller cam buckle and secure it with a new stitch capable of breaking load of minimum 300kg.



Please refer to the instructions below for correct installation of the webbing on the D-ring:



## 9 SPEED SYSTEM

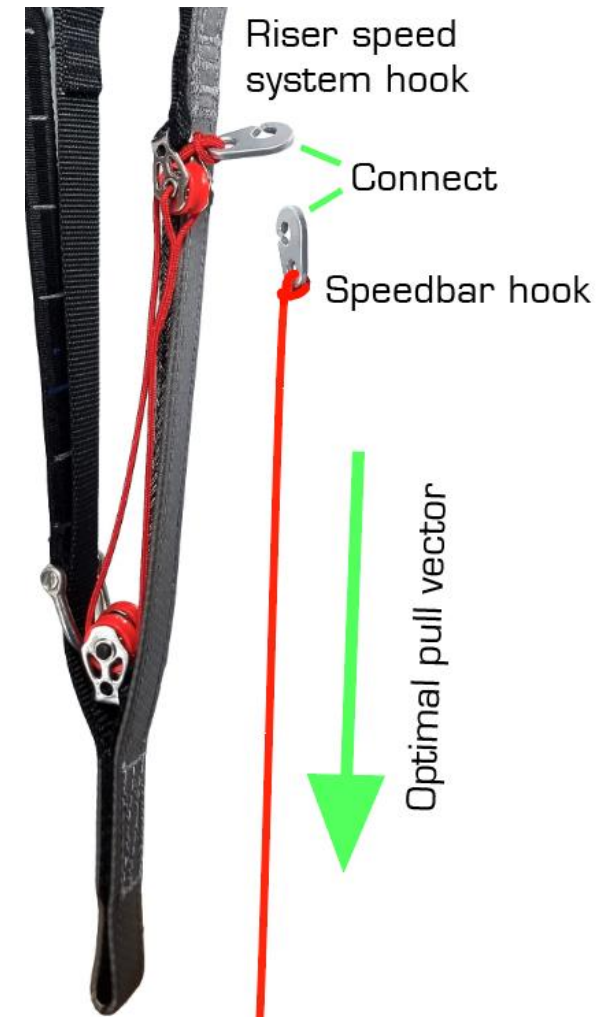
Installing and adjusting the speed system prior to first flight - Refer to the harness or paramotor user manual of your specific model.

The following is a general info for reference only:

First attach the Harness / Paramotor to the glider while on the ground. Connect the speedbar hook to the riser speed system hook. Sit in the harness preferably while hanging and have someone hold the riser up in a flying position for you. Adjust the speed bar line length to allow full engagement of the speed system and most importantly – allow the speed system to fully disengage when the speed bar is released to prevent permanent activation of the speed system.

It is recommended to route the speedbar line through the harness or paramotor pulleys in a way that will allow the riser speed system to follow the optimal pull vector as in the illustration.

- **Set the trimmers to Neutral before activating the speed system.**
- **Activating the speed system while trimmers fully open will not increase maximum speed.**
- **Do not use main brake handles while the OAA is activated.**



### **WARNING:**

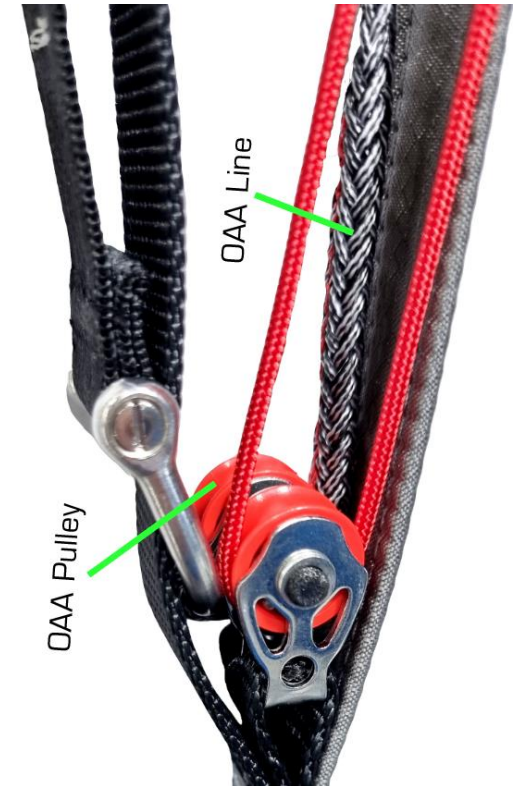
THE USE OF THE SPEED SYSTEM IN TURBULENT CONDITIONS OR CLOSE TO THE GROUND IS DANGEROUS. WHILE FLYING WITH THE ACCELERATOR, THE GLIDER HAS A REDUCED ANGLE OF ATTACK AND IS THEREFORE MORE SUSCEPTIBLE TO TURBULENCE AND MAY COLLAPSE OR PARTIALLY DEFLATE. GLIDERS REACT FASTER WHEN ACCELERATED AND MAY TURN MORE. THE ACCELERATOR SHOULD IMMEDIATELY BE RELEASED IN THIS CASE.

## 10 OAA SYSTEM

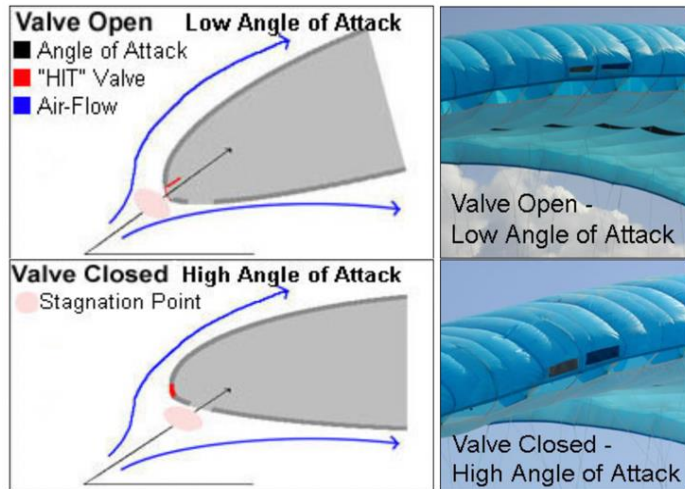
OAA –One Action Acceleration system allows pilots to simultaneously operate both the speed system and the trimmer for optimized angle of attack at any given speed. The OAA system allows automatic operation of the trimmers according to the position of the speed bar. This allows for a larger speed range that can be fully used in one smooth action of the speed bar without the need to manually operate the trimmers.



- **Prior to using the speedbar, move the trimmers to the Neutral position – Blue mark line on the trimmer webbing.**
- **It is not recommended to apply speedbar with trimmers fully open - This will not result in a greater speed range.**
- **Do not use main brake handles while the OAA is activated.**



## 11 HIT VALVES (High-speed In-Take)



The F1 is equipped with an Active HIT Valve system (patent pending) to improve the overall performance and safety of the wing especially during accelerated flight.

The valve system allows maximum inflow of air when the glider acquires a lower angle of attack while accelerated. HIT valves open and close in flight to increase the internal pressure of the glider.



For the valves to work properly it is important to keep them wrinkle free especially in sub zero temperatures. Make sure the valves are flat and are in the closed position when you fold the glider. Before launch the pilot should check all the valves and verify that they are flat and cover the entire area of the mesh opening. Creased and wrinkled valves will not adversely affect the safety of the wing.

## 12 PRE-INITIAL FLIGHT INSPECTION

Pilots, please ensure that your glider has been test flown and fully checked by your dealer before taking it into your possession. Verify that the dealer checked and confirms that the glider is airworthy.

### 12.1 FIRST CHECK AND PREFLIGHT INSPECTION

With every new glider, the following points should be checked:

- Connection points between the glider and the harness/paramotor.
- Check that there are no lines twisted, tangled or knotted.
- Check that the risers and speed-system are hooked up to the harness correctly.
- Check that the trimmers are set to the neutral position or below.

### 12.2 BRAKE SETTING

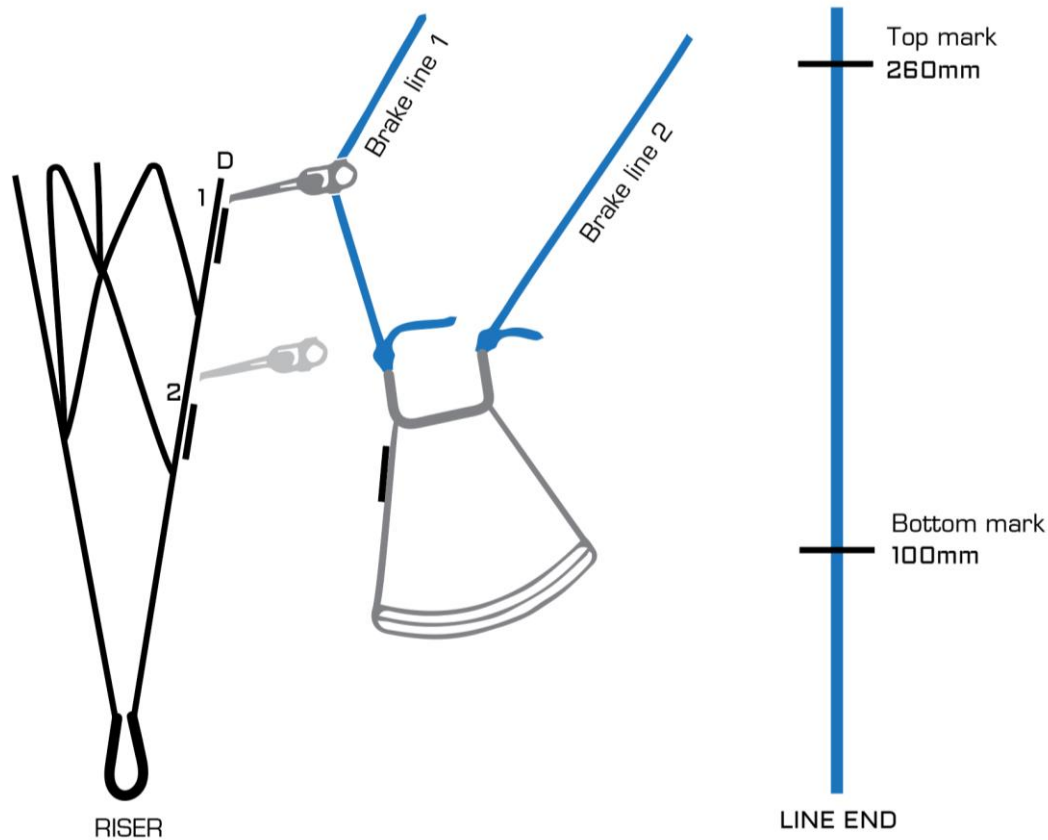
Before the first flight the pilot / dealer has to inflate the glider in the flight configuration, on the intended frame, to check and if needed, adjust the brake line length as required. It is important that the brakes are not set too short. If the glider is above your head the brakes should have about 10 cm of free travel in the brake from the brake guide on the riser to the activation point of the brakes.

If the pilot changes the type of paramotor, please check the brakes again to ensure that the brakes are not too short/long.

Since there are several hook-up point configurations on paramotors, the F1 comes with longer brake lines to allow for adjustment to your requirements, however, this should only involve lengthening not shortening. Shortening the brakes will cause them to be too short when

accelerating the wing, which can be both dangerous and inefficient. The excess lines should be trimmed or taped or stowed in a safe manner so that they do not increase the chance of the brakes getting pulled through the mesh into the propeller.

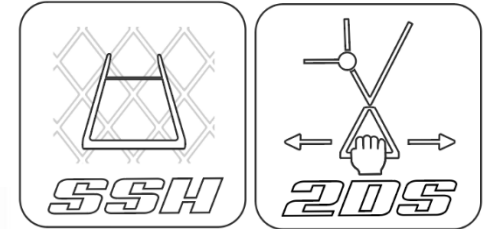
The illustration below is for reference for brakes line length adjustment and guiding pulley location.



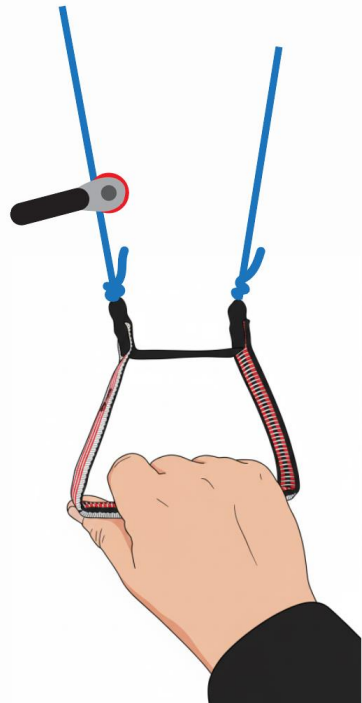
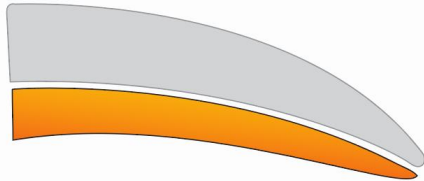
- The #1 pulley position is recommended for low hang point risers attachment to frame/harness. Move brake handle to the Top mark on the brake line and secure with a knot. Repeat for both lines 1 and 2.
- The #2 pulley position is recommended for high hang point risers attachment to frame/harness. Move brake handle to the Bottom mark on the brake line and secure with a knot. Repeat for both lines 1 and 2.
- Tip steering handle lowering kit is available (14 kit). This kit relocates the tip steering handle magnet lower on the riser. Contact your dealer or Apco for info or to place an order.

### 12.3 2D BRAKES OPERATION

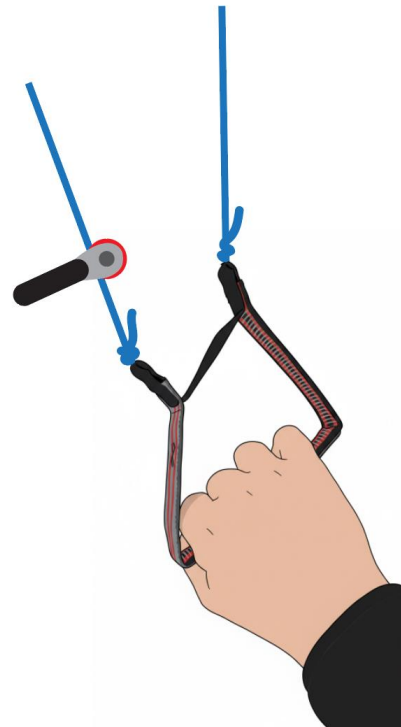
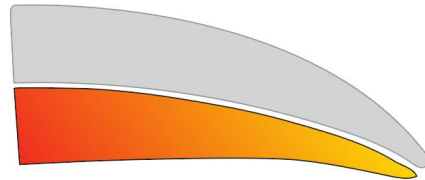
The F1 features a 2D steering with Split steering handle (SSH). The split steering handle allows differential control of each line while connected to the same brake handle for increased or differential steering input on demand.



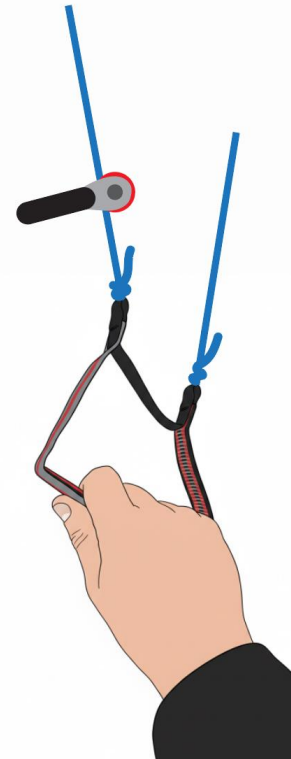
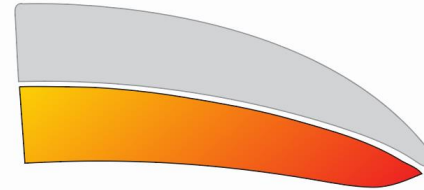
NORMAL BRAKE INPUT ON INNER AND OUTER SECTIONS OF THE TRAILING EDGE



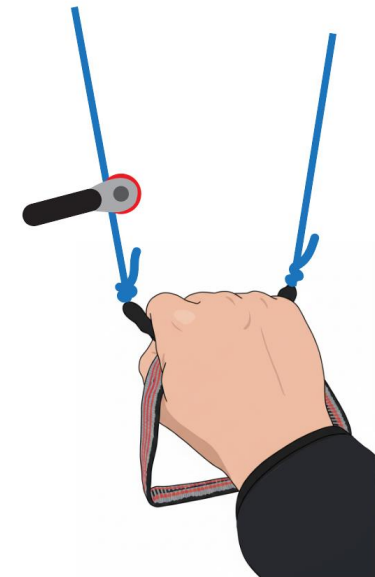
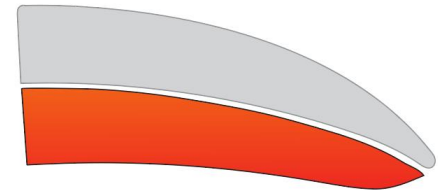
HIGHER BRAKE INPUT ON INNER SECTION OF THE TRAILING EDGE



HIGHER BRAKE INPUT ON OUTER SECTION OF THE TRAILING EDGE



INCREASED BRAKE INPUT ON INNER AND OUTER SECTIONS OF THE TRAILING EDGE



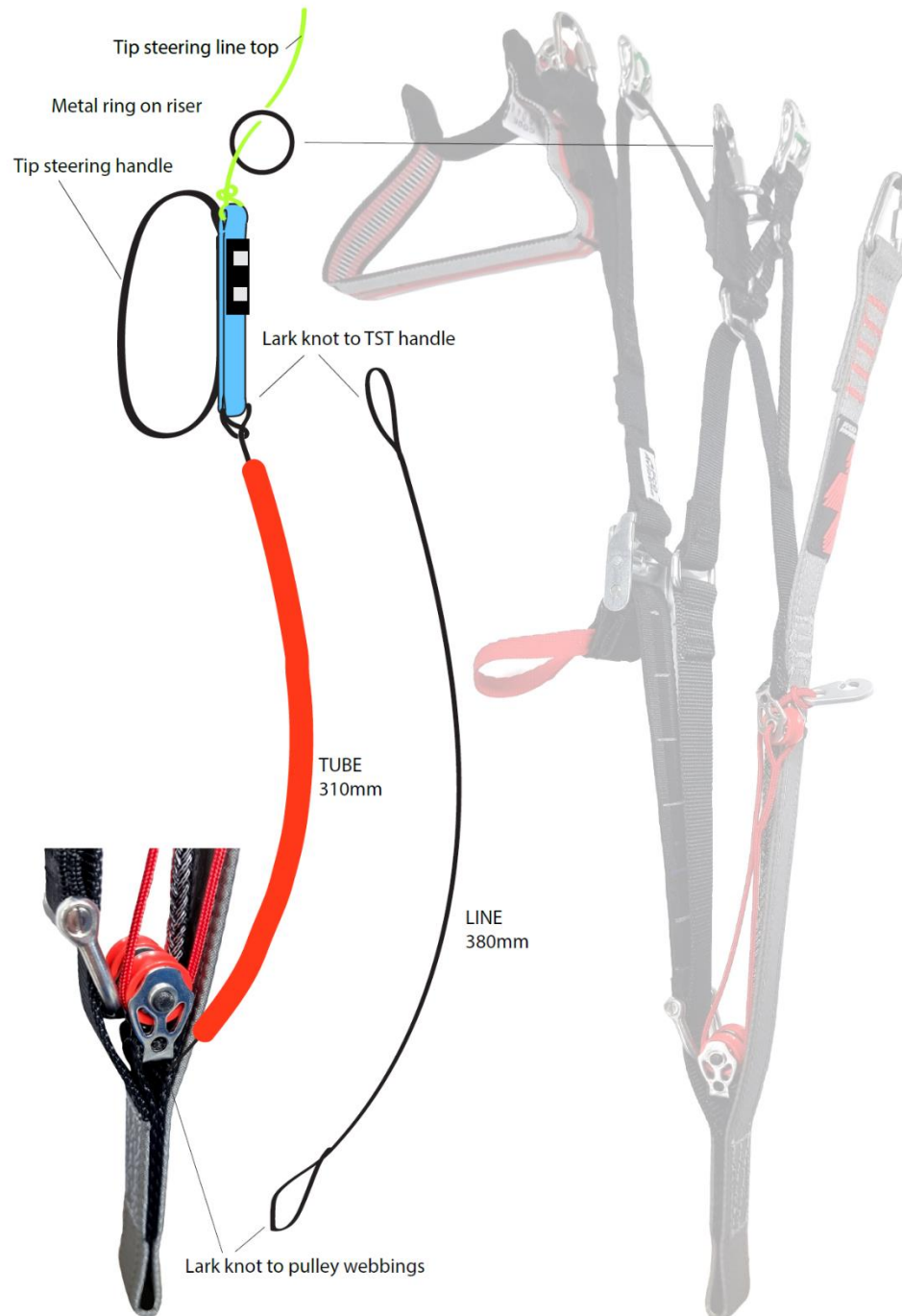
## 12.4 TIP STEERING LOWERING KIT – 15KIT

The 15kit is a method of tip steering using a flexible tube and a line connected to the tip steering handle on top end and fixed to the riser on the bottom. This method enables steering the glider by pushing or pulling the tube. It was designed to lower the toggle height, enabling comfortable and intuitive input at various trimmer levels as well as flying styles. The kit can be removed and tip steering is possible with tip steering handle only.

Installation instructions:

1. Run the black Dyneema line through the pulleys webbing at the bottom of the riser. Make a lark knot and make sure the free end comes out on the correct side L or R.
2. Install the red tube on the black Dyneema line.
3. Undo the tip steering handle knot and run the free end of the black Dyneema line through the bottom small loop of the handle and make a lark knot by squeezing the tip steering handle through the line loop to end up with a connection like in the illustration.
4. Make sure the top steering line is running through the retaining ring on the riser as per the illustration and tie it to the top loop of the tip steering handle.

For removal of the assembly please reverse the steps above.



## 12.5 TRIKES

Due to the very wide assortment of trikes on the market with different set up and design, it is necessary to verify that the specific trike can be successfully coupled with the wing.

Please make sure your dealer performs the following procedures before first flight:

- Wing to be fully inspected by the dealer as in the paragraph above
- Wing to be ground handled and visually checked while inflated.
- Connection method to the trike is in line with APCO's recommendation.
- Pilot can reach both main brake handles and tip steering handles (if available).
- Before first take-off perform "taxiing" test on the ground slowly rolling with the wing checking all aspects of the set-up without actually taking off. (including roll/yaw stability, pitch stability, stall tendency, brake response etc.)
- Only after the wing passes the taxiing test – then the next step is to make the actual test flight to make sure trike and wing are correctly coupled and the system is airworthy.
- Take the wing into your possession only after your dealer confirms that wing is airworthy when coupled with your trike.

## 13 ANNUAL / PERIODICAL AIRWORTHINESS INSPECTION

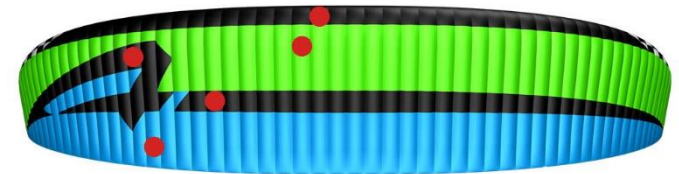
It is highly recommended that your glider (and other equipment), undergo a Periodical Airworthiness Inspection which is to be done by Apco, or an Apco approved / appointed service centre.

This is recommended to be done every 24 months or every 100 hours, whichever comes first.

We suggest for you to follow the regulations set by your national authorities if it requires more frequent periodical check.

### 13.1 POROSITY

Porosity is measured with a calibrated Porosimeter. It should be measured in at least 5 different places on the upper surface. Below is an example of the sections we test at Apco. The upper surface, at 20-35% chord (from L/E) is most prone to becoming porous, and is thus the most important section to test. It is also important to test the different cloth types, and different colours used.



### 13.2 LINE MAINTENANCE

Lines must be carefully inspected periodically. In his/her own interest, the pilot must observe the following points to ensure maximum performance and safety from the glider. Avoid sharp bending and squeezing of lines. Take care that people do not step on the lines. Do not pull on the lines if they are caught on rocks or vegetation. Avoid getting the lines wet. If they do get wet, dry them as soon as possible at room temperature and never store them wet.

One line of each line group (a, b, c, upper and lower) must be tested for minimum 50% of the rated strength. If the line fails under the load test or does not return to its specified length all the corresponding lines must be replaced. Never replace lines with different diameter or type of lines as all gliders were flight and load tested for safety in their original configuration. Changing line diameter/strengths can have dangerous / fatal consequences.

Professional use of gliders: towing, tandem, schooling and competition flying requires more frequent line inspection and replacement of A, B, C, D and brake lines. For replacement lines please refer to our online direct line services.

### **13.3 REGULAR INSPECTION CHECKS**

- Damage to lines, webbing and thread on the stitching of the harness and risers.
- The stainless-steel connection links on the risers are not damaged and are fully closed.
- The pulleys of the speed system are free to move and the lines are not twisted.
- The condition of the brake lines, stainless steel rings and the security of the knot attaching the brake handle to the brake line.
- The sewing and connection of the lines.
- Damage to hook up points on the glider.
- Internal damage to the ribs and diagonal ribs.
- Damage to the top and bottom panels and seams between panels.

## **14 EMERGENCY PARACHUTE**

It is recommended to use a certified rescue parachute when flying, no matter your intended altitude or flying style. Attaching the rescue parachute should be done in accordance with the recommendations of the harness and reserve parachute manufacturer

## **15 PARAGLIDING**

The F1 is designed as a Paramotor wing and is not ideally suited for Free Flying, however, should you choose to do so, read the following before you do.

### **15.1 TAKE OFF**

As this is not a training manual, we will not try to teach you launching techniques. We will only briefly go through the different launch techniques to help you get the most out of your glider.

#### **LAUNCH LAYOUT**

Pre-flight check should be done before every flight.

Spread the glider on the ground. Spread the lines, dividing them into eight groups A, B, C, D and brake lines left and right. Make sure the lines are free and not twisted or knotted.

Make sure all the lines are on top of the glider and none are caught on vegetation or rocks under the glider. Lay out the glider in a horseshoe shape. This method ensures that all the lines are equally tensioned on launch, and results in an even inflation.

The Flexon rib reinforcements will keep the leading edge open for easy inflation.

### **ALPINE LAUNCH OR FORWARD LAUNCH**

The F1 has very good launch behaviour in no wind conditions.

For the best results we recommend the use of the following techniques: Lay out the glider and position yourself in the centre of the wing with the lines almost tight.

With a positive and constant force inflate the wing holding only the A-risers, and smoothly increase your running speed. The wing will quickly inflate and settle above your head without the tendency to stick behind.

After you leave the A-risers, apply about 15% brakes and the F1 will gently lift you off the ground.

### **STRONG WIND AND REVERSE LAUNCH**

The F1 has a lot of lifting power and care should be taken in strong wind. It is advisable to have an assistant hold you when attempting a strong wind launch. It also helps if you walk towards the wing and leave the A-riser just before the glider gets above your head.

The assistant should let you walk in under the wing on inflation rather than resist the inflation; this reduces the tendency of the glider to lift the pilot premature

### **TOW OR WINCH LAUNCHING**

All APCO gliders are well suited for winching and have no bad tendencies on the winch. With towing it is important to have the wing above your head on launch and not to try and force a stalled wing into the air. This is especially important if the winch operator is using high tension on the winch. Very little brake if any need be applied on launch and during the tow. Directional changes can be made with weight shift rather than brakes. While on tow, the brake pressure will be higher and more force may be needed to make corrections than in normal flight.

## **15.2 FLIGHT TECHNIQUES**

The F1 is intended for experienced pilots.

### **FLYING SPEED**

Indicated trim speed is dependent on the amount of brake the pilot is using, wing loading, altitude above sea level and the accuracy and make of speed probe. The speeds recorded in technical data were at optimum wing loading at sea level using a Flytec, 6030 thus there could be a slight variation in speed range numbers that a pilot may record.

Speed readings in the flight reports could differ as this was measured during testing using various instruments and is an indication of the difference between trim, stall and top speed. The speed range will be the same but the actual numbers may differ.

- With 0% brake and trimmers at 0 (Neutral) the F1 will fly at 45 - 49 km/h with a sink rate of 1.5m/s.
- Trim closed, and 25% brake the glider will fly at 35-39km/h with minimum sink rate 1.2 m/s.
- The best glide angle is achieved with closed trims 0% brakes and 5-10% speed bar, with OAA not activated (Brummel hooks locked).
- At 80% of the brake range, the glider will fly at about 28km/h and will be close to the stall point at about 26km/h (at optimum weight).

### **CAUTION:**

APART FROM WHEN FLARING AT LANDING THERE SHOULD BE NO REASON TO FLY WITH 70% TO 100% BRAKE. THE SINK RATE OF THE GLIDER WILL BE EXCESSIVE AND THERE WILL BE A POSSIBILITY OF ENTERING A DEEP STALL OR FULL STALL SITUATION. THERE IS ALSO THE RISK OF GOING NEGATIVE OR ENTERING A SPIN WHEN ATTEMPTING TO TURN THE GLIDER NEAR THE STALL SPEED.

### **WARNING:**

THE USE OF THE SPEED SYSTEM IN TURBULENT CONDITIONS OR CLOSE TO THE GROUND IS DANGEROUS. WHILE FLYING WITH THE ACCELERATOR, THE GLIDER HAS A REDUCED ANGLE OF ATTACK AND IS THEREFORE MORE SUSCEPTIBLE TO TURBULENCE AND MAY COLLAPSE OR PARTIALLY DEFLATE. GLIDERS REACT FASTER WHEN ACCELERATED AND MAY TURN MORE. THE ACCELERATOR SHOULD IMMEDIATELY BE RELEASED IN THIS CASE.

## **THERMAL FLYING**

F1 has high internal pressure and needs very little pilot input even in very turbulent conditions.

In light lift it is advised to make flat turns to keep the glider from banking too much and avoid increasing the sink rate.

In strong lift conditions it is most effective to make small turns in the core with relatively high bank.

For the best climb rate in ridge lift we recommend using about 15% to 20% brake and trimmers fully closed.

## **ASYMMETRIC COLLAPSE**

If one side of the glider partially folds or collapses it is important to keep your flying direction by applying weight shift and some brake on the opposite side.

The wing should re-inflate on its own without any input from the pilot.

To help re-inflation it is possible to pull some brake on the collapsed side and release immediately.

In the event of a big deflation, i.e. 70%, it is important to apply brake on the inflated side of the wing, but care must be taken not to pull too much as you could stall the flying side.

The glider is very solid and has a strong tendency to re-inflate after collapse.

## **CRAVAT**

In case a cravat should occur from an asymmetric collapse or other manoeuvres, it is important to keep your flying direction by applying some brake on the opposite side and then it can usually be opened by pulling down on the stabilo line of the affected side while countering the turn with the opposite brake and weight shift.

## **FRONT STALL OR SYMMETRIC COLLAPSE**

In the event of a front stall the glider will normally re-inflate on its own immediately without any change of direction. To speed up re-inflation briefly apply 30%-40% brake (to pump open the leading edge). Do not hold the brakes down permanently to avoid an unwanted stall.

## **B-STALL**

The F1 has a very clean, stable B stall.

To enter the B stall the pilot has to pull the first 20-cm slowly until the glider loses forward speed and starts to descend vertically.

Then the pilot can pull more on the B until he/she attains a stable 7 to 9 m/s descent rate. The Glider has no tendency to front rosette or become pitch unstable. To exit the B stall the pilot releases the B slowly until the glider has regained its shape and then the last 15 cm fast to prevent the glider from entering deep stall.

The F1 can be controlled directionally in the B stall by pulling more on one B riser than on the other to create a turn in any direction. The B-stall is a safe controlled way of losing altitude fast without any forward speed.

## **BIG EARS**

Big ears maneuver is not available using the F1.

## **DEEP STALL (Parachutal Stall)**

Under normal flying conditions the F1 will have no tendency to enter deep stall. All gliders can however under certain conditions enter and stay in deep stall configuration (as a result of ageing of materials, improper maintenance or pilot induced).

## **SIGNS OF PARACHUTAL STALL**

- The pilot has very little or no forward airspeed and no wind in his face.
- The glider will be fully open but the cells will be bulging in and not out on the bottom surface.
- The glider might have a very slow turning sensation.
- You will have an increased vertical descent.

## **RECOVERY FROM PARACHUTAL STALL**

It is important to recognize this situation. Most accidents involving parachutal stall happen because the pilot did not realize that he was in deep stall.

The best way to exit a parachutal stall is to pull all the A risers down to get the wing flying again. The pilot can pull the riser down until the wing starts to fly again. The moment the wing starts to fly the pilot should release the A risers, or the wing might suffer a frontal collapse.

Alternatively, the pilot can push the speed bar to lower the angle of attack and get the wing flying again.

By pulling one or both brakes while in deep stall the pilot can accidentally enter a full stall or spin. (Not recommended)

## **SPIRAL DIVES**

The F1 has very good behaviour in spiral and has no tendency to stick in the spiral. By progressively applying brake on one side the glider can be put into a spiral dive. Safe high sink rates can be achieved like this. The spiral has to be exited slowly by releasing the brake over one complete turn or the glider may pitch forward and possibly suffer a collapse.

Care must be taken that the pilot has enough height to exit the spiral safely.

Sink rates in excess of 19m/s can be obtained.

### **CAUTION:**

Some gliders can be neutral in spiral and may not exit without pilot input. To exit a neutral spiral the pilot has to lean his/her weight to the outside of the turn or apply brake INPUT TO TURN OUT OF THE SPIRAL (on the outside wing). As soon as the glider starts to slow down in the spiral the outside brake must be released.

PILOTS CAN SUFFER BLACK OUTS IN SPIRALS AND THE PILOT HAS TO EXIT THE SPIRAL AS SOON AS he/she FEELS ANY ABNORMAL SYMPTOMS (Black dots in field of vision or light-headedness).

## **STRONG TURBULENCE**

Firstly, If you know its turbulent conditions – DON'T TAKE OFF!!!

If you unexpectedly encounter strong turbulence, fly with trimmers open and no brakes applied to let the reflex stabilize the glider, use only secondary brake handles (tip steering) and land as soon as possible.

## **STEERING NOT FUNCTIONING**

If the pilot cannot reach the brake or steering lines for any reason or if they are not functioning properly, (for example: If they break on a damaged point) the pilot can control the glider by pulling down on the rear risers.

Care must be taken when steering like this, as much less input is needed to turn the wing and the response of the wing is also much slower than when using the brakes.

IF YOU PULL TOO MUCH ON ONE OR BOTH RISERS THE GLIDER WILL SPIN OR STALL.

On the landing flare the pilot should be especially careful not to stall the glider too high.

## LANDING

Before landing, the pilot should determine the wind direction, usually by checking a windsock, flags, smoke or your drift over the ground while doing one or more 360° turns.

- Always land into the wind.
- At a height of about 50 meters your landing setup should begin. The most commonly used one is to head into the wind and depending on the wind strength the pilot should reach his/her landing point by making s-turns.
- At a height of about 15 meters the final part of your descent should be made at trim speed into the wind.
- At a height between half a meter and one meter you can gently flare the glider by pulling gradually down on the brakes to the stall point. When top-landing it is sometimes not necessary to flare or a much smaller flare may be required, especially in strong ridge conditions.

## TREE LANDING

If it is not possible to land in an open area, steer into the wind towards an unobstructed tree and do a normal landing approach as if the tree is your landing spot. Flare as for a normal landing. On impact hold your legs together and protect your face with your arms. After any tree landing it is very important to check all the lines, line measurements, and the canopy for damage.

## WATER LANDING

As you approach landing, open all the buckles of the harness except for one leg. Just before landing, release the remaining buckle. Let the wing pitch completely forward until it hits the water with the leading edge openings; the air inside will then be trapped, forming a big air mattress and giving the pilot more time to escape. Less water will enter the canopy this way, making the recovery much easier. Get away from the glider and lines as soon as possible, to avoid entanglement. Remember that a ballast bag can be emptied and then inflated with air for a flotation aid.

The wing should be carefully inspected after a water landing, since it is very easy to cause internal damage to the ribs if the canopy is lifted while containing water. Always lift the canopy by the trailing edge, not by the lines or top or bottom surface fabric.

## 16 POWERED FLYING

NOTE: Before each start it is necessary to perform a complete check of the paraglider, harness and power unit.

- Never place the power unit downwind of the paraglider.
- Double check that there is no fuel leakage.
- Do you have enough fuel for the flight? It is always better to have too much than too little!
- Check that there is nothing loose in the harness that could possibly contact the propeller in flight.
- Whenever you encounter a problem, fix it AT ONCE however small it is!
- Always put on and lock your helmet before getting in the harness.
- Before each launch do a full pre-flight inspection.

## **FIRST FLIGHTS**

In order to get familiar with your wing we recommend flying with trimmers at the 0 position first in stable non-turbulent weather. Once you feel confident with your wing, you can start experimenting with faster trim settings and speed system, taking all necessary precautions. Learn to use all of the additional speed of the F1.

Remember: do not exceed the envelope of weather, wing and other parameters to insure safe flying.

## **TAKE-OFF : FORWARD LAUNCH**

Please check wind direction, even when it seems that there is no wind at all, there is always some drift.

Therefore, be careful in determining the conditions, since in PPG flying it is most important that the launch and initial climb are performed with a head wind (the danger of losing your airspeed while crossing the wind gradient is greatly reduced).

Special attention must be paid to trees, power lines and other obstacles, including the possibility of emerging rotors.

### Launch preparation

Lay out the paraglider in an arc, downwind of the power unit, with all suspension lines taut and pointing toward center of the power unit.

The risers are to be laid on the ground.

Set the trimmers in 0 positions.

Make sure that you warm up the engine while standing windward of the wing. Stop the engine before clipping in the risers.

Now have quick checks if:

- Helmet is on and fastened.
- The risers are clipped into the carabiners.
- The trimmers are properly set.
- Propeller is clear.
- Speed system is functioning, problem free.
- Steering lines and handles are free and not twisted.
- The engine delivers full power.
- Take off area is clear of approaching traffic, obstacles and free to use.

When you are sure all is OK, you can clip in the wing and execute launch as described in paragraph 17.2.

From now on you should steer / handle the paraglider facing forward, without looking back over your shoulder. If the wing is retreating and behind you at a low angle, do not turn around as there is a danger of falling on your back and damaging the propeller and catching lines in the propeller, so it should be avoided.

During take-off, when you feel the tension on both risers to be equal, make sure the wing is overhead, open up full power and lean back to counter the engine thrust, so that it can push you forward rather than towards the ground.

The best option is not to use the brakes, allowing the paraglider to rise as it was laid out.

If it starts to deviate from its course, pull the opposite riser and run under the centre of the wing while continuing in the initial direction.  
If the wind suddenly drops, give a strong pull on the risers.  
If the paraglider falls to one side or back too far to lift again - kill the engine, cease launch and check the conditions once again.

As the wing rises, the forces grow lighter and it should stabilize above your head without overshooting.  
This is the best moment to check if it is inflated well and the lines are not tangled, but do not stop or turn.  
Once you feel the forces on the risers decrease, run faster and let go of the risers.  
See if there is already any opposition on the brakes and, if necessary, use them to correct direction or to increase lift at take-off.

Remember:

- If the cage of your power unit is not stiff enough, the risers will strain during launch and can deform it to the extent of collision with the propeller. Before applying full throttle, see that the cage does not catch any lines.
- Any brake operation (or steering input in general) should be smooth and gentle.
- Do not try to take off until you have your wing overhead. Hitting power before that can cause dangerous oscillations.
- Do not sit in the harness until you are sure you are flying!
- The faster the trim setting is, the more brake input is required to take off. The F1 is best with trims fully closed for takeoff and landing

### **TAKE-OFF: REVERSE LAUNCH (In strong wind)**

Reverse launch can be executed holding in one hand both A risers and one brake, with throttle and the second brake in the other hand. In a moderate to strong wind, this is by far the best technique.

In weaker wind it is better to prepare for forward launch, as running backwards with an engine on your back is not an easy thing to do. It is reasonable not to pull the wing up until you are really determined to launch, especially when it is clipped in.

Lay down the paraglider with its trailing edge against the wind.

Unfold the wing enough to find the risers and check that no lines are looped over the leading edge.

Stretch the risers against the wind, separating the right and left one.

We suggest that you lay the risers in the same way as you will be turning during reverse launch, and place one riser over the other, with rear risers on top.

It should be done this way because once you clip in, the cage of your power unit will make turning on your own very difficult.

Now run the pre-launch checklist.

After warming up the engine put the power unit on, turn to face the wing, go to the risers and clip them in the appropriate carabiners.

Pull on the front and rear risers to open the cells.

It is a good idea to pull up the wing briefly in order to check that the lines are not tangled.

Holding the risers, brakes and throttle as described above, pull the front risers and raise the wing over your head.

On most occasions you won't have to use the brakes.

Once you have it overhead, turn around, open the throttle and take off.

Remember:

- You are launching with your hands crossed. You have to perfect this technique before trying it with a running engine on your back.
- Any brake operation (or steering inputs in general) should be smooth and gentle.
- Do not try to take off until you have your wing overhead, applying the throttle early can cause dangerous oscillations.
- Do not sit in the harness until you are sure you are flying!
- The faster the trim setting is, the more brake input is required to take off.
- When clipping in the crossed risers, you can find proper connection of the speed system particularly hard. Be careful not to confuse the risers!

## **CLIMBING**

Once you are safely airborne, continue heading against the wind, using brakes to correct the direction.

Do not try to climb too steeply.

In powered flight the F1 behaves more like an airplane than a paraglider, and it is good idea to regard it as such. If there are no obstacles present, it is by far safer to fly level for a while after take-off, clearing the ground gradually, gaining some speed before converting it to height with a brief pull on the brakes.

Another reason not to try climbing too steeply is the risk connected with engine failure at low altitude.

F1 in a steep climb does not stay behind as much as conventional paragliders.

The F1 does not have SRS (prevents or delays possible stall), so low speed at low altitude carries inherent danger of stalling

Besides, you should always be able to land safely in case of engine malfunction, so it's better not to take unnecessary risk and always fly with a safe margin of speed and height

Depending on the power unit geometry, it is possible that after take-off you will notice a propeller torque (known as P-factor), which may induce a turn, which increase with amount of power, this can be countered with steering, and asymmetric trimmer settings.

When climbing steeply with closed trimmers and high power, beware of the possibility of stall.

Due to considerable vertical distance between thrust axis and wing chord - the range of safe power operation is closely connected to your skills and equipment.

Power-unit induced oscillations:

Certain configurations of engine weight, output and propeller diameter can cause roll oscillations, during which the pilot is being lifted to one side by the torque effect, swings down due to his weight, and then is lifted again and so on.

To avoid this, you can:

- Change the throttle setting,
- Adjust the cross bracing to counteract the torque (if present),

- Shift yourself to the other side of the harness and/or
- Change the trimmer setting.

The best method is to fasten opposite cross-bracing, or apply some weight-shift.

Such oscillations usually occur at full power - the greater the engine output and propeller diameter, the bigger the swings.

In addition, pilot reactions can often be wrong or come too late, increasing the problem instead of solving it.

In this case the safest way to deal with this question is to close the throttle and release the brakes.

Less-experienced pilots especially tend to overreact.

This is called a pilot-induced oscillation, and the proven solution is to leave the brakes alone.

## **LEVEL FLIGHT**

If you have a vario meter or altimeter – check it regularly.

In level flight it is very easy to start climbing unintentionally.

The instrument will help you optimize speed and fuel economy.

Every flight is affected by the configuration of your gear, but due to F1's ability to fly safely without constant piloting, it will let you adjust everything to the best effect.

Good knowledge of weather conditions (e.g. wind at different altitudes) and knowledgeable use of thermals, convergence or other kinds of lift will help you greatly reduce fuel consumption and increase flight range.

Do not hesitate to thermal with the F1 in order to win some altitude and spare fuel - you will be surprised how efficient it is.

Closing the trimmers will make the climb ratio even better.

## **TRIMMERS AND SPEED-SYSTEM SETTINGS**

You are free to experiment with all possible settings, as long as you are at safe altitude and watch the weather. Fully opened trimmers increase the speed of the wing and overall penetration and reflex, but when trimmers are opened it is highly recommended to use secondary steering only (stabilo steering), using the main brake handles will increase the risk of a collapse.

As forces on the brakes grow at high speeds, weight shift or steering with STABILO STEERING system becomes increasingly effective.

The TIP STEERING system can be used in all trimmer and speed system positions, also in combination with main brake handles. At maximum speed bar and fully opened trimmers we highly recommend steering with STABILO STEERING system.

Strength needed to initiate the turn will be smaller and there will be no decrease in speed.

On the other hand, slow trimmer settings decreases sink and steering forces, so it is possible to efficiently use the thermals.

Worth noting is the F1's impressive speed range -the maximum speed is more than double the stall speed.

Turns can be much improved by additional use of throttle, speed-system etc. Once you master these techniques, you will be able to

### **REMEMBER:**

- Trim setting must be part of the pre-start check list!
- Taking off with open trims may be dangerous.
- Asymmetric adjustment will have an inherent turn.

## **POWER OFF LANDING**

At an altitude of 50 meters switch the engine off and glide as you would on a conventional paraglider.

It reduces the chances of damaging the propeller on landing, but on the other hand there is only one attempt possible -so it has to be done right!

F1 preserves the energy well, so there is a long float necessary, exchanging the abundant speed for lift with your brakes.

## **POWERED LANDING**

Make a flat approach with the engine idling, then level out and lose the speed before final flare.

Immediately on landing, switch off the engine.

The main advantage of this procedure is of course the possibility of going around with the wing again (repeating the approach) if anything goes wrong.

Still, if you forget to switch off the ignition before the wing falls down, there is a considerable risk of damaging propeller, catching lines in it or even suffering injuries connected with falling on your running engine.

### **REMEMBER:**

- Whenever possible, get to know the landing field before taking off.
- Check the wind direction before planning the approach.
- Landing with power off requires much less space.
- In case of any doubt, practice the landing until you feel totally safe
- After landing, continue to maintain the wing's direction straight, as on turning you always risk getting lines in the propeller.
- Turn only if there is danger.

## **17 PACKING**

Spread the wing completely out on the ground. Separate the lines to the left and the right side of the glider. If the risers are removed from the harness, join the two risers together by passing one carabiner loop through the other. This keeps them neatly together and helps to stop line tangles.

Fold the canopy alternately from the right and left sides, working towards the centre, press out the air, working from the rear towards the front. Place the risers at the trailing edge of the folded canopy and use them to finally roll up the canopy.

## **18 MAINTENANCE & CLEANING**

Cleaning should be carried out with water and if necessary, gentle soap. If the glider comes in contact with salt water, clean thoroughly with fresh water. Do not use solvents of any kind, as this may remove the protective coatings and destroy the fabric.

## 19 BUTT HOLE II (Auto Debris release valves)

The F1 is equipped with Butt-hole II, which automatically clears smaller particles such as sand, grass and stones from the wing.



## 20 STORAGE

When the glider is not in use, the glider should be stored in a cool, dry place. A wet glider should first be dried (out of direct sunlight). Protect the glider against sunlight (UV radiation). When on the hill keep the glider covered or in the bag. Never store or transport the glider near paint, petrol or any other chemicals.

Do not leave your paraglider in the trunk of a car or exposed to the sun.

Temperatures on a hot summer's day in a closed environment: car, etc. can easily reach over 60°C

At these temperatures Nylon permanently changes its characteristics which may alter the behaviour and shape of the wing.

It will cause permanent damage to the paraglider, rendering it non-airworthy. APCO's warranty will not be applicable.

## 21 DAMAGE

Using spinnaker repair tape (for non-siliconized cloth) can repair tears in the wing (up to 5cm). A professional repair facility should repair greater damage.

## 22 THREE YEAR WARRANTY

The following warranty is granted by APCO Aviation Ltd. with respect to all of its standard Serial Production Wings, manufactured from January 1, 1994, subject to full compliance by the purchaser/owner to its following terms, as hereby detailed:

APCO Aviation Ltd. guarantees the fabric of its wings against porosity to the extent that the wing becomes Unairworthy. The fabric is warranted to remain sufficiently impermeable to air, to fly safely for a period of 250 hours or 3 years, whichever comes first. APCO Aviation Ltd. undertakes at its option to repair or replace the wing, as necessary, at APCO's discretion. The under-surface porosity does not affect airworthiness, and does not need to be checked during annual inspection.

This warranty is subject to the following limitations: a. The original purchaser has properly completed and returned the Warranty Registration Card to APCO Aviation Ltd. b. The wing owner duly records the wing's flight time and use, in an official Log Book, signed by himself and/or an official instructor site supervisor, meet official etc. This Warranty will not be in force for wings without properly registered

and logged Flight Records. The wing has undergone its periodical inspections as required in accordance with its users' Manual and Directives of Association, to which the owner is affiliated, and has received its periodical signed Airworthiness Certificates from the owner's local paragliding authority, to this effect. d. The wing has been properly maintained and serviced, exclusively by APCO authorized dealers and their employees, and cleaned, dried, packed and stored in accordance to the manufacturer's instructions. For replacement wings the owner shall be entitled to a discount from the retail price proportionate to the remaining life span of the wing, as covered by this Warranty (pro-rata).

The wing has been flown for recreational use only – high stress applications, including (but not exclusive to) towing, instability maneuvers, schooling, training and any professional use of the wing, are expressly excluded from the terms of this Warranty.

This warranty does not apply to the following:

- Use outside the specified load limitations.
- Color fading of the fabric.
- Damage or corrosion caused by solvents, fuel or other chemicals.
- Accidental or flight (take off/landing) related damage.
- Damage caused by emergency parachute deployment.
- Modified wings.
- Any special, indirect, incidental or consequential damages of any nature whatsoever, resulting from the use of the wing, or lack of use and pleasure thereof, other than the cost of the product.

This warranty is transferable.

Your statutory rights are in no way affected by this warranty.

The manufacturer retains the right of final decision regarding any claims made within the framework of this warranty.

## 23 GENERAL ADVICE

A qualified person or agent of the company should check the glider every year.

The glider is carefully manufactured and checked by the factory. Never make changes to the wing or the lines. Changes can introduce dangerous flying characteristics and will not improve flying performance.

Do not put the glider in direct sunlight when not necessary. In order to protect the glider during transportation or waiting time we recommend one of our lightweight storage bags.

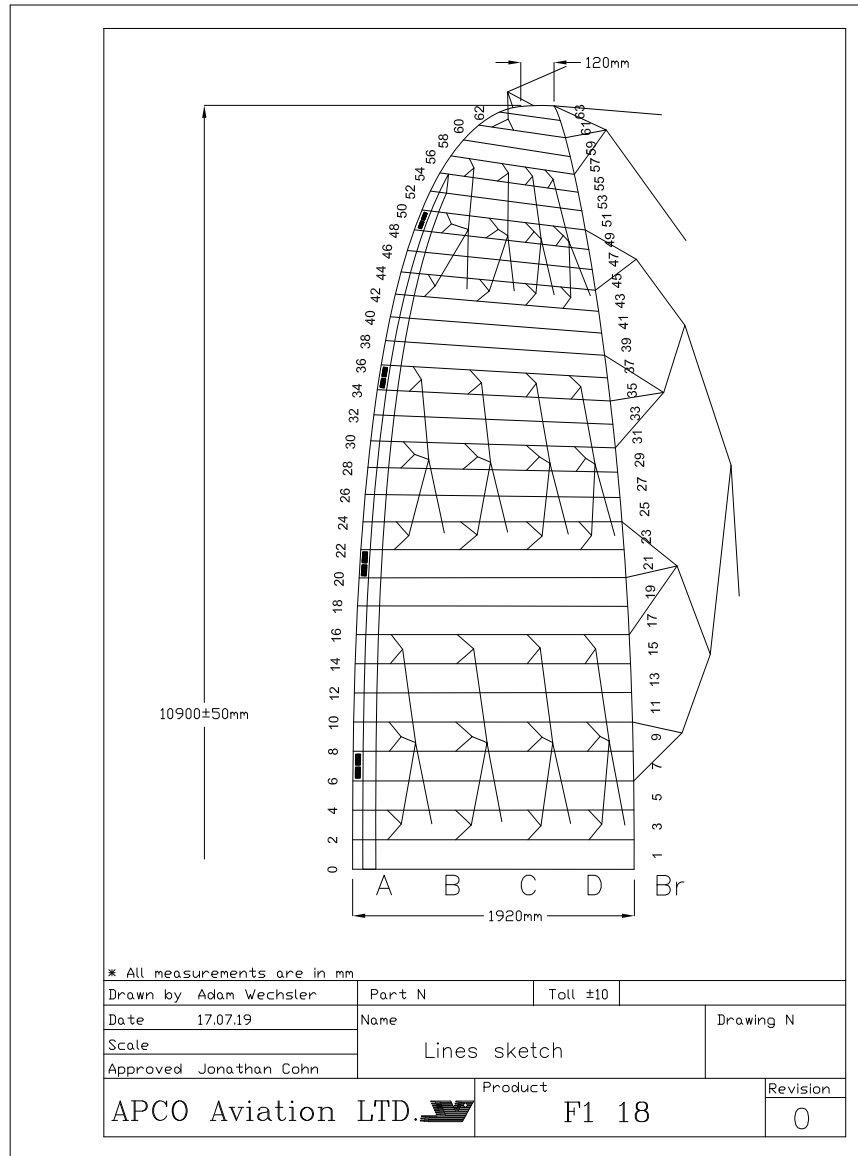
- Do not fly over water, between trees or power lines and other places where engine failure will leave you helpless, always make sure you have possibility for emergency landing.
- Mind the turbulence caused by other gliders or even by yourself, especially when flying low.
- It is not recommended to let go of the brakes below 100 meters, because a possible power unit malfunction may require immediate attention.
- In general, never trust your engine, as it can stop at any moment. Always fly prepared for engine failure.
- Unless it is absolutely necessary (e.g. collision avoidance), do not execute tight turns against the torque direction. Especially when climbing you can easily enter a stall or negative spin.
- Do not fly with tail wind at low altitudes - it narrows your options!
- Do not wait for the problem to grow - any change of engine sound or a vibration may indicate a problem. You'll never know until you land and check it out!
- Be certain of your navigation
- Remember that not everyone is fond of your engine noise.

If you have any doubts about flying conditions - do not begin.

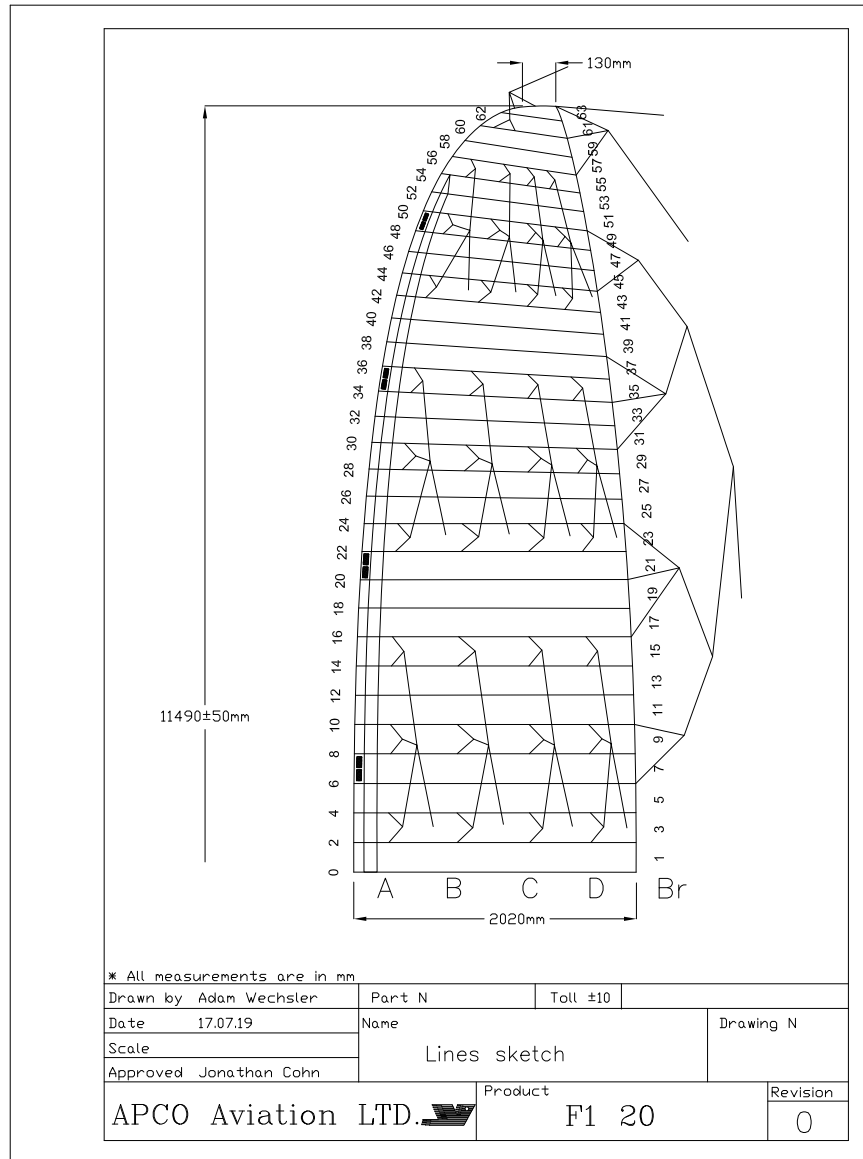
If you have any questions, please contact your dealer or us.

Lastly, be equipped with a certified emergency parachute and helmet on every flight.

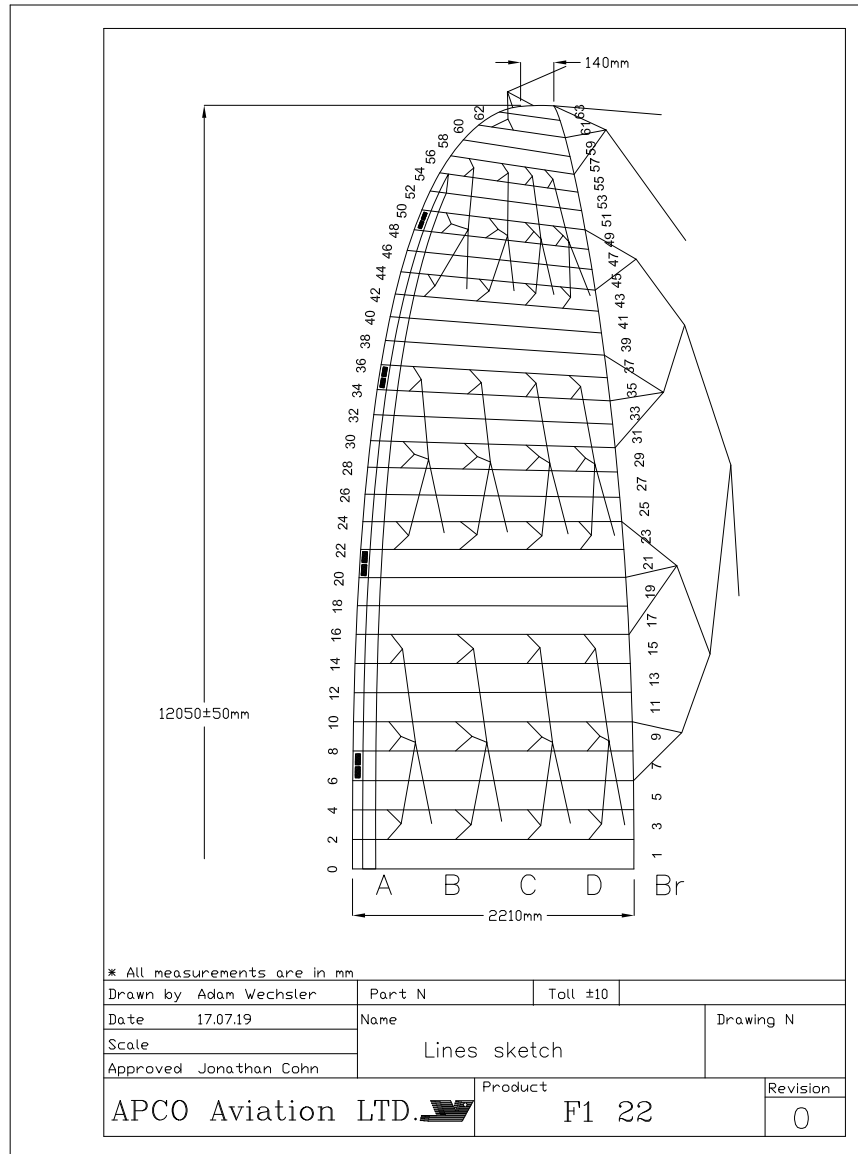
# 24 F1 - 18 LINE SKETCHES



# 25 F1 – 20 LINE SKETCHES



# 26 F1 - 22 LINE SKETCHES





APCO wishes you many hours of enjoyable flying.

Take Air!

Factory address:  
Apco aviation  
Chalamish Street 7  
Industrial Park  
Caesarea 3088900 ISRAEL

Tel: +972 4 6273727  
[www.apcoaviation.com](http://www.apcoaviation.com)